

PARKLANE ON HAY

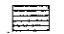

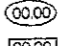
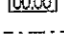
All built items as at display at 15a Keenan Street included. Full list follows.

1. All siteworks included
2. All headworks fees paid for water, sewer, Western power and Alinta.
3. Fixed price Master Builders Association contract – no price rises during construction.
4. All council building fees paid.
5. Fully comprehensive construction, public liability, workers compensation and Housing Indemnity Insurance.
6. A full six-year structural guarantee on your new home.
7. Engineered steel reinforced concrete footings and slab to Australian Standards.
8. 120 day defects liability period after handover.
9. Connections to all services on block.
10. Bi flex white ant treatment below concrete slab and to perimeter.
11. Insulation to external walls and R3.3 Insulation to ceilings as per the building code of Australia.
12. Sturdy dry milled M.G.P. 10 pine wall, ceiling and roof framework to Australian Standards with C.C.A. treated bottom plate for termite protection.
13. Quality aluminium sliding windows and sliding doors with flyscreens and fly doors as per colour schedule.
14. Keyed alike locks to sliding doors and to sliding windows.
15. Waterproof flashings around all windows and sliding doors.
16. Obscure glass to bathrooms and WC's.
17. Quality 100mm steel posts as shown on plans.
18. A choice of 3 elevations available
19. A choice of 3 face bricks available
20. Colonial gutters and Zincalume downpipes (fully painted).
21. Colorbond Custom Orb steel corrugated roof sheeting.
22. Solid Jarrah external door frames as per plans.

23. Feature solid core front door and sidelight with translucent glazing – Corinthian Madison as per display.
24. Corinthian Cambridge feature internal doors as per display. (or Standford)
25. 10mm Plasterboard lining to walls and ceilings. Steel reinforced edges to all external corners and to upper 3 sides of all windows.
26. Water resistant Hardies “Villaboard” to all wet area walls for extra protection.
27. 25mm M.D.F. timber internal door frames.
28. 67mm M.D.F. timber splayed architraves around all door frames.
29. 67mm M.D.F. timber splayed skirting
30. 170mm x 32mm M.D.F. timber window nosings and cappings with sculpted edges.
31. Quality Gainsborough 3 in 1 Trilock to front door in satin chrome finish. External doors keyed alike, your owner’s keys unused until handover.
32. Quality Gainsborough Alyssia lever handles in satin chrome finish to all internal doors. Privacy locks to bathrooms, WC’s and main bedroom.
33. Walk – in robe to bed 1 and sliding mirrored robes to beds 2&3 as per plans.
34. Built in linen cupboards as per plan with 4 shelves in white melamine.
35. Generous kitchen cupboard space as per display home in a choice of 3 colour schemes.
36. Microwave recess and overhead cupboards as per display.
37. Dishwasher recess built into kitchen cupboards with water and electrical points.
38. Laminated semi recessed vanity units to the ensuite and bathroom as per display.
39. One and a half bowl Oliveri UF09 stainless steel insert sink to kitchen, for a lifetime use.
40. Large 1665 long Multiform rectangular acrylic gloss white bath and shower as per display.
41. Caroma Mini Concorde toilet suites in white finish. (Dual flush 4 star rated)
42. Quality Fowler Tasman vitreous china basins set into vanity tops.
43. Bathroom and ensuite mirrors – whole width of vanity tops x 900mm high.
44. Clear laminated safety glass to shower screens with chrome frame.
45. Quality Mentelle chrome taps throughout house. (4 star rated taps, 3 star rated shower heads)

46. Automatic washing machine taps to laundry.
47. 46-litre S.S. laundry trough with sud saver set in laminated cupboard and work top.
48. Quality Bouvarde chrome bathroom and W.C fittings.
49. Quality copper water supply throughout house. Hardies "Blue Line" water pipes to ground installation.
50. Two external garden taps, one front one back.
51. Generous tile allowances to wet areas as per display. A choice of 3 colour schemes available.
52. Floor tiling to entry, dining, kitchen, pantry, under stairs cupboard, linen as per display. A choice of 3 colour schemes available.
53. Quality chrome edge stripping to wet area doorways and tiles area edges.
54. Your floor tiling laid properly to Australian Standards with wet area floors finished rough and then graded with sand and cement bases laid to floor, NOT tiled straight in pre-poured floors.
55. Top of the range Westinghouse stainless steel electric multi function wall oven (PON667) and a Westinghouse stainless steel gas cook top (GHL16) with wok burner as per plan display.
56. 3 in 1 light/fan/heater to bathroom and ensuite. Exhaust fan to WC.
57. 80mm thick natural finish to all concrete paths as per plan.
58. 100mm natural concrete pad to all carports and crossovers.
59. Rheem Integrity 18 instantaneous gas hot water system. (5 star rated)
60. Generous power point allowance – 3 doubles to kitchen, 2 doubles to bed 1 and lounge, double to all other rooms and 2 external double waterproof points one to carport and one to patio.
61. Ample lights, one to each room and passage. One outside each external door and carport.
62. Switch type circuit breakers to power board, including safety E.B.E breakers to power circuits.
63. Light fittings provided to all lights as per display or similar.
64. 2 Hardwired smoke alarms installed to Australian Standards.
65. Full quality painting internally and externally.
66. Solver Premium washable paint to interior walls, and white gloss to doors and frames.

67. Colorbond alfresco as per plan.
68. Colorbond garden shed as per plan.
69. Storm water piping to kerb.
70. Sectional overhead door with remote control, motor and 2 handsets.
71. Gas connections to hotplate, HWS and to bayonet to lounge.
72. 2 T.V. points and aerial.
73. Ducted evaporative air cooling as per display.
74. Carpets as per display. A choice of 3 colours available.
75. Slimline venetian blinds as per display.
76. Clothes hoist as per plan and display.
77. Full professional landscaping including plants, mulch, lawn and fully automatic reticulation.
78. Free comprehensive customer selection service to help you turn your new house into your new home.
79. Fast efficient building of your home with a guaranteed time.
80. The security and peace of mind that comes from building with Kalgoorlie's leading builders, having won 70 building excellence awards in the last 21 years. We have been building houses in Kalgoorlie for two decades and we employ only fully qualified staff to service you.

-  CLOTHES HOIST
-  GARDEN SHED
2.5m X 1.6m
-  PROPOSED LEVELS
-  STORMWATER



Goldfields Homes

Quality, Value & Service

GOLDFIELDS HOUSE
36 BROOKMAN STREET
KALGOORLIE W.A. 6430
TELEPHONE: (08) 90216966
FACSIMILE: (08) 90216934

REV.	V.O. N ^o	DATE

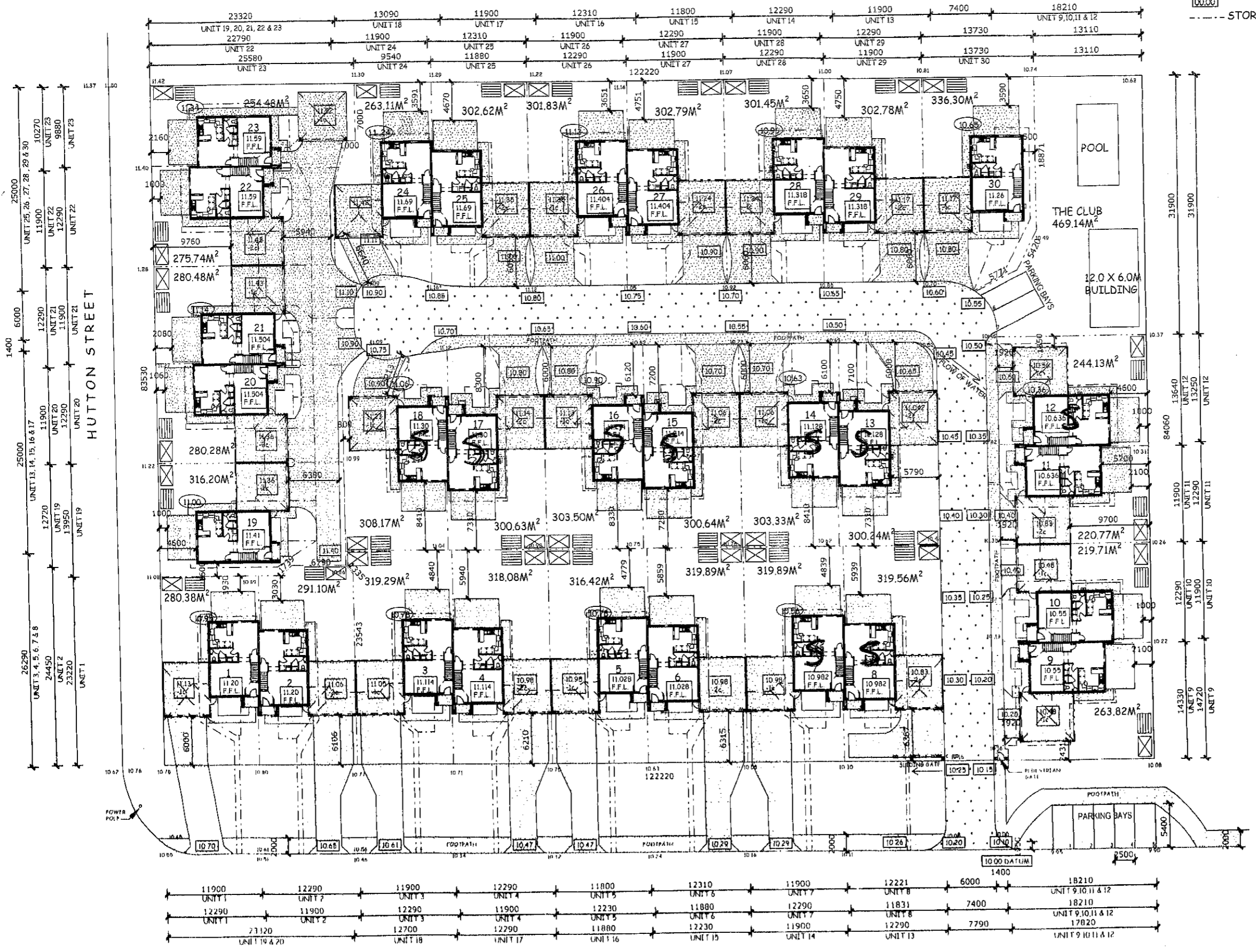
THIS IS ONE OF THE DRAWINGS REFERRED TO IN THE CONTRACT


DATE _____
CLIENT _____
CLIENT _____
BUILDER _____

CLIENT
Goldenstate Properties
ADDRESS
Lot 1939- 1941 (369-400)
Hay St, Kalgoorlie

sub-contractors to verify all dimensions on site.

DATE	07.02.08	JOB N ^o	0609
DRAWN	C.M.	CHECKED	
SCALE	AS SHOWN	DRWG	REV



 SITE PLAN 1 : 500 HAY STREET